

# EYEGLAMOUR

**ELECTIC EXCELLENCE**

**FASHIONABLE FRAMES**

**TOKYO TRENDSCAPES**



**nippon  
nuances**

CHIC EYEWEAR  
INSPIRATIONS FROM THE  
LAND OF THE RISING SUN

VERSACE VSCP12841100255 RM1,039

# CITY LIGHTS, CHIC NIGHTS

ELEGANT EYEWEAR  
STYLES THAT ELEVATE  
EVENING AMBIANCES

**PUBLISHER**

DATO' CL LIAW

**GROUP MARKETING HEAD**

JOEY CHUN

**SENIOR MARKETING  
EXECUTIVE**

CHIA CHIAN HUI

**ARTISTIC DIRECTION,  
CONCEPT & STYLING**

JOANNE LIM

**FASHION IMAGES  
PHOTOGRAPHER**

WAN CHUN HUNG @  
BLUEPRINT DESIGN & STUDIO

**STYLED PRODUCT IMAGES**

KEVIN TEH FOR BLUEPRINT  
DESIGN & STUDIO

**STYLING ASSISTANTS**

LIEW SHUK KHUEN,  
YAP SHOKE LUI

**VIDEOGRAPHERS**

NICK FONG, ZERMI NG

**MODEL**

SALLY @ BRAVO MODELS

**MAKEUP & HAIR**

PHOEBE @ BRAVO CREATIVE

**WRITER**

KATHLYN D'SOUZA

**ART DIRECTOR**

EURIC LIEW

**PUBLISHED BY**

FOCUS POINT VISION CARE  
GROUP SDN BHD (199301013733)  
UNIT 1, 3, 5 & 7, JALAN PJU 1/37,  
DATARAN PRIMA.  
47301 PETALING JAYA,  
SELANGOR

GUCCI GUCGG1031S1001 RM1,939





L-R  
BVGLARI BVLSP4209BF150454 RM1,659  
DIOR FEMME SG DFM30MONTAB2U120A5 RM3,098

# STREET CHIC

PERFECT YOUR URBAN LOOK WITH VERSATILE EYEWEAR





GIORGIO ARMANI



# URBAN GAZE

A SPOTLIGHT ON EYEWEAR THAT DEFINES CITY CHIC





L-R  
DIOR FEMME FRAME DRMDRSPIRITO4118000 RM2,079  
VERSACE VSCP4426BU1GB8754 RM1,729



# SHADES OF COOL

EXPLORE THE WORLD OF FASHIONABLE EYEWEAR FOR EVERY SEASON

# SPECTACLES OF STYLE

WHERE FORM MEETS FUNCTION IN  
THE WORLD OF EYEWEAR

L-R  
??????? 12345678/9  
??????? 12345678/9



# FASHIONALLY VISIONARY

REIMAGINE YOUR LOOK THROUGH THE LENS OF STYLE





L-R  
CNLSP5448A1C561S154 RM1,539  
GUCCI GUCGG039601002 RM2,152



Seeing beyond

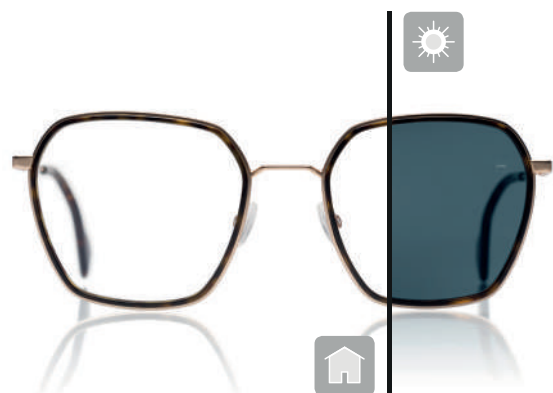
# Performance perfected.

# Faster clear.

# Faster dark.\*



## ZEISS PhotoFusion X



### Photochromic lenses perfected.

- Sunglass-level darkness outdoors
- Up to 2.5x faster to clear\*\*
- Unique blue light and full UV protection – outside & indoors.

\*\*Compared to a well-known photochromic brand's latest generation.

Scan here for more info!



\*Compare to previous generation ZEISS PhotoFusion.

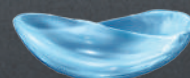
Moisture  
Breathability

# GO BEYOND COMFORT<sup>1-3</sup>

Protection  
Weightlessness



- **Advanced MoistureSeal<sup>®</sup>** retains 96% lens moisture for long-lasting wear.<sup>4</sup>
- **ComfortFeel** enriches lenses with a solution containing ingredients that are released for all-day comfort.<sup>1,5</sup>



Live the **ULTRA Life.**

**BAUSCH + LOMB**

References:

1. Data on file (2019) All Tostine Tables Combined 25 OCT (v01) 2. Data on file (2020) MoistureSeal™ Support memo for kafilcon A document, 24 July. 3. Data on file (2020) Development of an Innovative Contact Lens Product that Promotes Ocular Homeostasis, 30th Apr. 4. Data on file (2020) R&D Clinical Report, ROC2-19-009, 17th Jan. 5. Data on file (2020), Uptake of Packaging Solution Components Claims Memo, 28 April.

Registered under Act 737, CB9970920-50833, MDAMD 0091/2022  
UOD.0019.MY.21

FROM TOP:  
OLISP5508U1175249 (FR) RM1,829 /  
VSCSP3334FIGB155 RM1,039 /  
BURSP13761134355 (FR) RM1,079



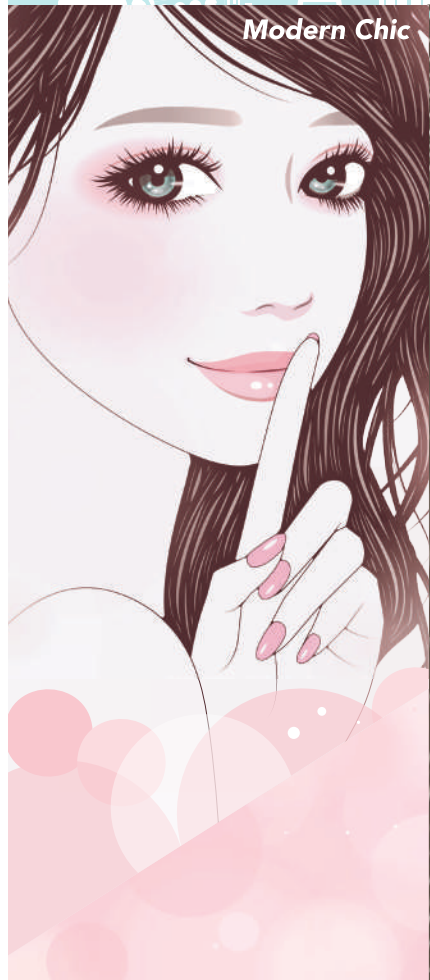
# EYES ON ELEGANCE

Find the perfect frames to reflect your unique persona

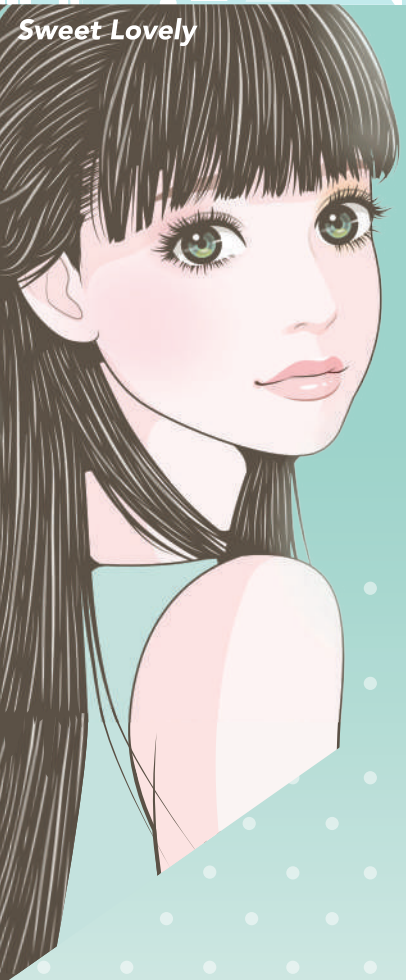


# FreshKon®

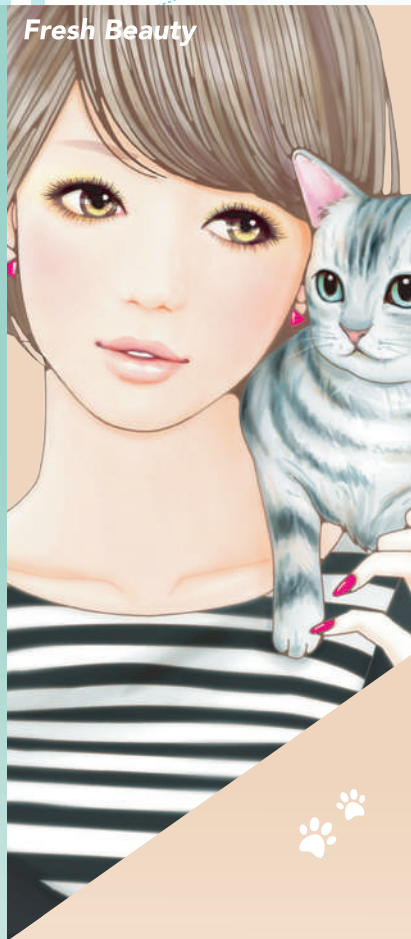
## ✕ Naho



Modern Chic



Sweet Lovely



Fresh Beauty



Summer Vibes



Glamour Glitz



monthly



Café Flat White

daily



Crystal Halo



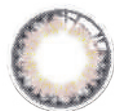
Café Long Black



Dreamy Halo



monthly

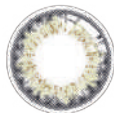


Amis Cedar

daily



Amis Brunette



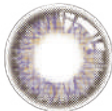
Amis Graphite



Amis Stone



monthly

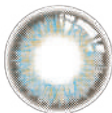


Envi Fog

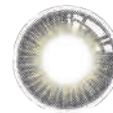
daily



Aelin Mocha



Envi Pebble



Aelin Slate

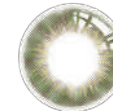


monthly



Flora Heather

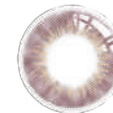
daily



Flora Calla Lily



Flora Snapdragon



Flora Daisy

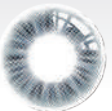


monthly



Ombre Caramel

daily



Ombre Fossil



Ombre Smoke



Ombre Walnut

FROM TOP:  
BURSP/3711133752 (FR) RM1,079 /  
FN9802TH11001 (FR) RM4,880 /  
IC! BERLIN / 999.9



# THE GLASSY GALERIE

Explore a diverse collection of  
glasses for every style and occasion

# SWITCH TO PRECISION1™

## FOR LONG-LASTING COMFORT<sup>1,2</sup>

## AND PRECISE VISION<sup>1,2</sup>



**SMARTSURFACE™  
TECHNOLOGY**  
For long-lasting moisture<sup>4,5,6</sup>



GB8698019-28568  
Registered Under Act 737

**SEE INSTRUCTIONS FOR USE FOR COMPLETE WEAR, CARE, AND SAFETY INFORMATION.**  
\*Eye exam may be required. Professional fees may apply. Terms & conditions apply.

**References:** 1. Grant T. et al. A Survey of Contact Lens Wearers and Eye Care Professionals on Satisfaction with a New Smart-Surface Silicone Hydrogel Daily Disposable Contact Lens. *Clinical Optometry* 2020;12:9-15. 2. Cummings S, Giedd B, Pearson C. Clinical performance of a new daily disposable spherical contact lens. *AAOpt* 2019, Poster. 3. PRECISION1™ (DDT2) Lens with Smart Surface study; Alcon data on file, 2019. 4. Tucker B, Leveillee E, Bauman E, Subbaraman L. Characterization of the Surface Properties of a Novel Daily Disposable Silicone Hydrogel Contact Lens. Poster presented at the American Academy of Optometry Annual Conference, October 23-26; Orlando FL. 5. iDDrop Comparative Study DACP and BioTrue ONEday Report; Alcon data on file, 2019. 6. iDDrop Comparative Study Oasys 1 Day and TruEye; Alcon data on file, 2019

MY-PRI-VCL-2200005 MDAMD 0019/2023

**Alcon**

FROM TOP:  
DFMDLADY9522S1I120C0 (SG)  
RM3,444 / CELINE / FENDI  
FE40098F 95P



# NO SHADY BUSINESS

Discover sunglasses that make a  
statement and keep you safe in style

# FEEL THE COMFORT<sup>1</sup> TOTAL<sup>TM</sup> Water Lens



~100% WATER CONTENT<sup>2</sup> AT THE SURFACE



\* % of Core applicable to DAILIES TOTAL1™ PRODUCTS ONLY.

**References:**

1. Pruitt J, Qiu Y, Thekveli S, Hart R. Surface Characterization of a Water Gradient Silicone Hydrogel Contact Lens (delefilcon A). Poster presented at: Annual Meeting of the Association for Research in Vision and Ophthalmology (ARVO); May 6-10, 2012; Ft. Lauderdale, FL.
2. Angelini T, Nixon R, Dunn A, et al. Viscoelasticity and mesh-size at the surface of hydrogels characterized with microrheology. Invest Ophthalmol Vis Sci. 2013; 54: E-Abstract 500.

MY-DTI-VCL-2300002 MDAMD 0134/2023

**Alcon**

FROM TOP:  
DFMDBOBBYB1U1/76A2  
(SG) RM2,541 /  
PRASPSR24ZF113I08M57  
(SG) RM1,749 / CELINE



# SUNSTOPPABLE STYLE

Where UV protection meets unbeatable fashion flair

# ECEES

*comfort air*

Monthly lenses  
that **provide**  
**long-lasting\***  
**comfort.**



*\*after 12 hours of wear, at 2 weeks (or 1 month)*

Registered under Act 737  
GB6405320-44428  
MDAMD 0090/2023  
[REF: Data on file, 2016, CooperVision.]

# MACTTALIC™

A Beautiful Natural Look from a Trusted Brand



## DESIGNED TO BOOST SPARKLE AND SHINE IN YOUR EYES

Enhance the shimmer of your eyes with the lustre of this coloured contact lens. MACTTALIC sparkles like a polished diamond and shines vividly like the celestial stars in the night sky. MACTTALIC™ gives your eyes boldness with absolute confidence.

[www.eyemeditech.com](http://www.eyemeditech.com)

Eyemeditech







# Do you live a dynamic and active lifestyle?

Do you want convenient glasses that adapt to light in your busy life?

Or maybe you had photochromic lenses before but were not satisfied with the fade-back performance when coming indoors?

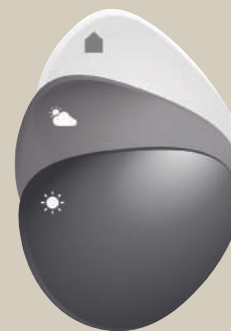
**Sensity Fast**, the fastest light adaptive lenses<sup>1</sup> is now available at all leading optical shops. These ophthalmic lenses are the latest addition to HOYA's Sensity family and address a wearer's biggest pain point - the slow fade back from dark to light when moving from outdoors to indoors.

Photochromic lenses are very convenient for the active prescription spectacle wearers as they combine both the benefits of prescription lenses and sunglasses in one frame. They darken in the sun when outdoors and fade back to clear upon moving indoors. The Sensity range including also Sensity 2, Sensity Dark and Sensity Shine, contain HOYA's specially developed microscopically accurate photochromic technologies with each lens type adapted to meet specific consumers' lifestyle and preferences.

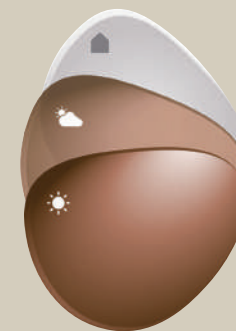
The new Sensity Fast lenses offer active patients photochromic solution which **fade back to half clear in seconds** when moving indoors<sup>2</sup> making them ideal for patients with active lifestyles. **With 100% UV protection<sup>3</sup> and modular blue light control<sup>4</sup>**, Sensity Fast wearers are protected both outdoors from the sun and indoors while working on digital device screens.

"There are many photochromic lenses on the market but until now something has been missing," said Alexandre Montague, CEO, HOYA Vision Care. **"With Sensity Fast we developed a lens that many Eye Care Professionals were asking for, one that has a rapid fade speed making the move from outdoors to indoors a seamless experience for wearers-perfect for younger generations and people on the go. They will just love it: it is so fast!"**

The Sensity Fast lenses are available in two popular colour options;



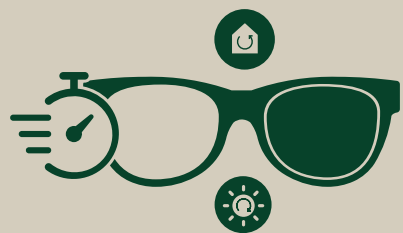
Silver Grey



Bronze Brown

"I'm always on the go, rushing from one thing to the next - so I need lenses that can keep up with me. Sensity Fast lenses fade back so quickly. I can see clearly and keep living spontaneously."

- Daniel, Junior Analyst



## Rapid fade back and sharp vision

**HOYA**  
FOR THE VISIONARIES

References:

- Hoya data on file. HOYA Internal Product performance validation. 09/2022. Up to 45% faster in reaching the half faded back state vs. the fastest fade back of the two leading players in the market (1.60 material, AR coating, brown colour, 230C)
- Hoya data on file. HOYA Internal Product performance validation. 09/2022. Takes less than 50 sec to reach half faded back state starting from 76% (category 2) Max. absorption at dark state on 23°C (1.60 material, AR coating, grey colour).
- Hoya data on file. HOYA internal Product performance assessment. 11/2022. According to the UV definition in the EN ISO 9890-3:2022 standard.
- Hoya data on file. HOYA Internal Product performance validation. 11/2022. Based on B-Cut EN measurement standard, the blue light absorption varies from a minimum of 9,2% (1.50 material, standard AR coating, at initial state, grey colour) to a maximum of 78,8% (1.50 material, standard AR coating, at darkening state, brown colour, 230C).

# THE IMPORTANCE OF EYE HEALTH

**GREAT NEWS!** Focus Point Vision Care Group Sdn. Bhd. is taking proactive steps to advocate for eye health and promote accessible and affordable eye care in Malaysia through its 360° Advanced Primary Eye Care campaign. This initiative seems to encompass various aspects of eye health and is crucial in ensuring that individuals prioritize their vision well-being.

With the 360° Advanced Primary Eye Care, it can help change lives. Early detection is critically important to prevent some common eye diseases from causing vision loss or even blindness. "Improving our vision is a journey worth taking, one step at a time." Said by Dato' Liaw Choon Liang, President & CEO of Focus Point.

The launch ceremony was honoured by the presence of Puan Nor Azizah bt Ismail, the Secretary for Malaysia Optical Council (MOC) of the Ministry of Health of the Ministry of Health Malaysia, who officiated the event alongside Dato' Liaw, Dato Joyce Yap of Kuala Lumpur Pavilion Sdn Bhd, and Mr. Paul Ho of ZEISS Group. The ceremony was attended by numerous guests and members of the media.

Recognizing the utmost importance of proper eye care, Focus Point is committed to enhancing the eye screening experience for patients through the investment in state-of-the-art Advanced Primary Eye Care (APEC) equipment at all their 67 APEC outlets. Focus Point Group are actively expanding the number of outlets to be equipped with the latest eye screening technology.

*"Improving our vision is a journey worth taking, one step at a time."*

**DATO' LIAW CHOON LIANG,**  
President & CEO  
Focus Point Vision Care  
Group Sdn. Bhd



# FOCUS POINT

## 360° APEC Advanced Primary Eye Care

### It helps to detect



Cataract



Glaucoma



Dry Eyes



Pterygium



Retinal  
Conditions



Refractive  
Errors



Contact Lens  
Related Issues

### 360° Advanced Primary Eye Care includes the following:



**01** Eye Health  
History



**02** Colour Vision  
Test



**03** Binocular  
Vision Test



**04** Refractive Error  
Evaluation



**05** Anterior Eye  
Assessment



**06** Eye Pressure  
Measurement



**07** Retinal  
Screening



**08** Consultation  
Session



Contact us to  
schedule your  
appointment.



# BOSS

EYEWEAR